

THE VENIZIA COLLECTION

DRAFT

Private covered entry with convenient direct access to the garage.

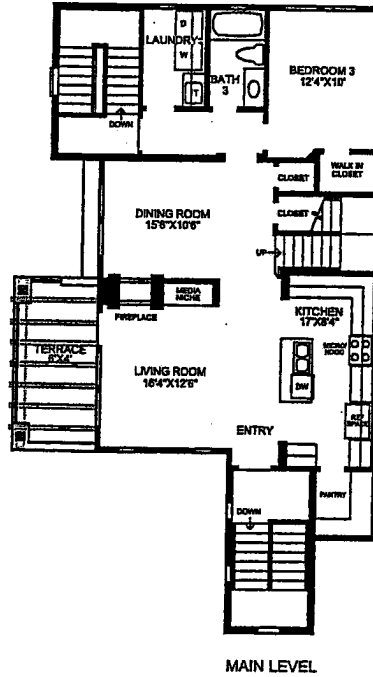
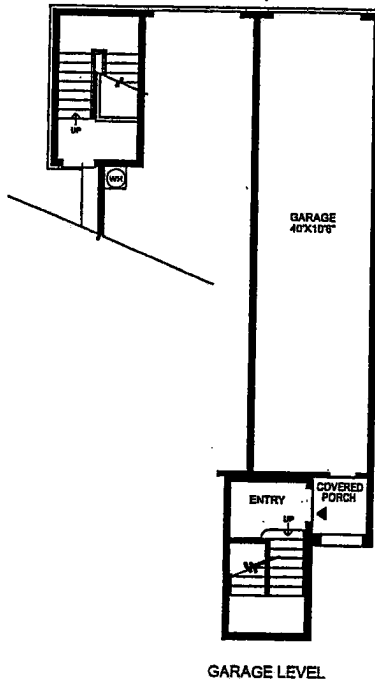
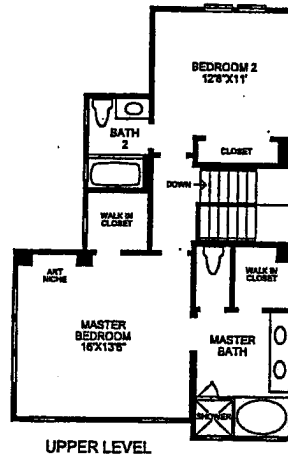
The well lit dining and living rooms feature a dual sided fireplace, media niche, and elegant terrace.

Spacious kitchen with island and walk in pantry.

The Master Bedroom suite offers two walk in closets, a master bath with soaking tub, separate shower, dual vanities and private toilet room.

Separate laundry room with sink located within the unit.

3 bedrooms, 3 baths and terrace.



All room dimensions are approximate, shown to the maximum dimensions of each room, and are subject to field variation. Dimensions should not be used to calculate room square footage. Some windows and floor plans may vary with elevations. Some features may vary from community to community. Please consult a Sales Manager for details. Options purchased must be specified in exhibit B.

(MASTER)_0123 ©2001 TOLL BROTHERS, INC. (VENIZIA)

Toll Brothers
America's Luxury Home Builder™

www.tollbrothers.com