



ASPENWOOD HOMES, INC.



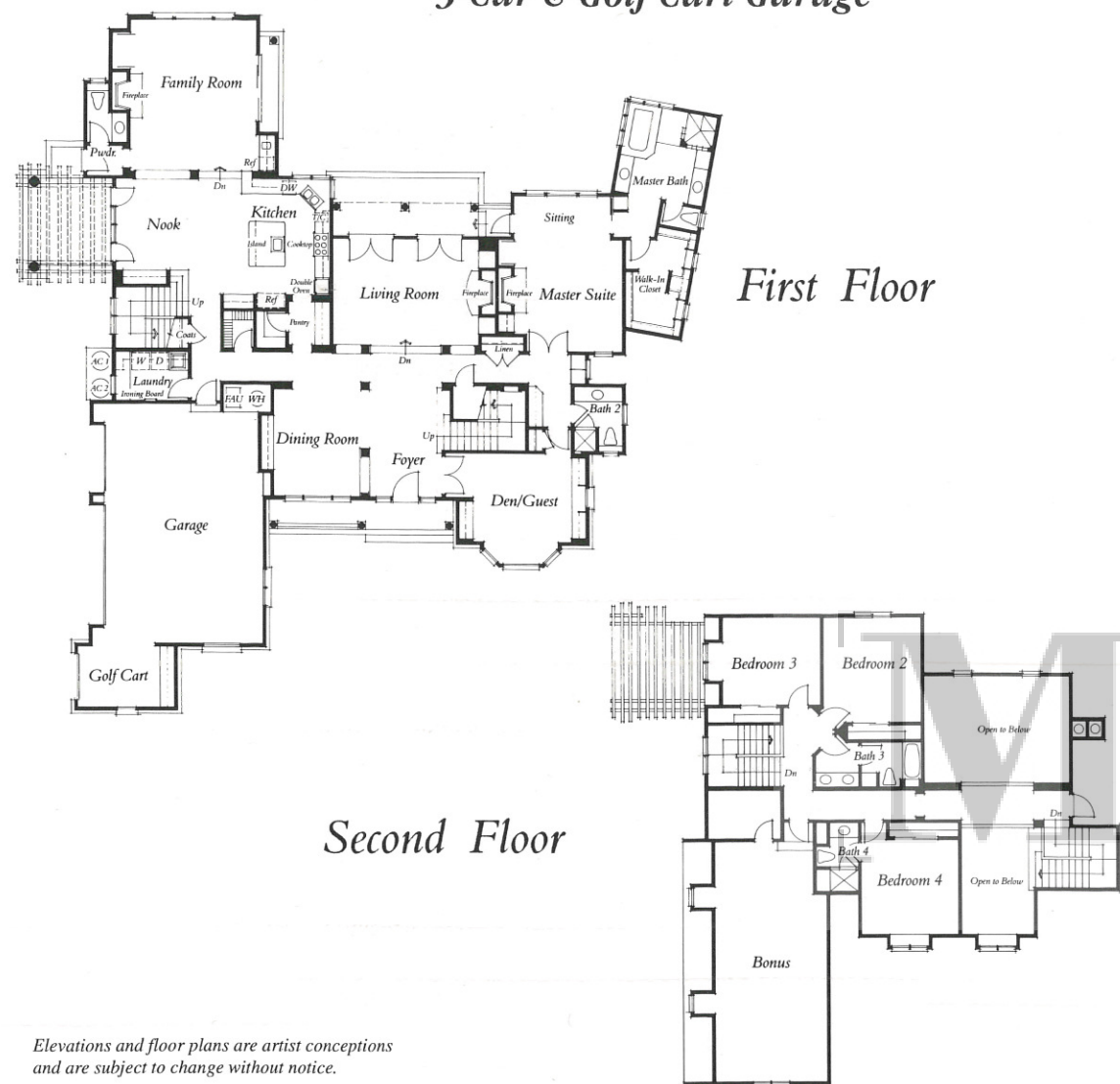
640 VARESE COURT

ENGLISH COUNTRY

—FEATURED BUILDER—

FLOOR PLAN

5 Bedrooms • 4 1/2 Baths • Bonus Room
3-Car & Golf Cart Garage



Elevations and floor plans are artist conceptions
and are subject to change without notice.

This spacious residence on a 1/2 acre homesite overlooks Ruby Hill Golf Course. Traditional English country styling is seen in the sweeping gables and rich accents of wood and stone. The gourmet kitchen features a Viking range, temperature-controlled wine storage room, butler's pantry, storage pantry, and utility staircase. Throughout this home, you will find exceptional finishing touches, including custom-made cabinets and built-ins, extensive use of tile, hardwood and millwork.

FEATURES

DISTINCTIVE EXTERIORS

- English country setting
- 1/2 acre homesite overlooking Ruby Hill Golf Course
- Large front porch with columns
- Stone and cedar bevel siding
- Tile roof
- Fully finished three-car and golf cart garage

SPACIOUS LIVING AREAS

- Expansive windows open living room to golf course views
- Built-in buffet in dining room
- Oak paneled library with built-in bookcases and box-beamed ceiling
- Family room with wet bar and built-in entertainment center

GOURMET KITCHEN

- Viking gas range
- Sub-zero refrigerator
- Center work island with salad sink
- Elegant slab granite and tile countertops
- Walk-in pantry
- Butler's pantry for glassware and china
- Temperature-controlled wine storage room
- Private terrace for outdoor dining off breakfast nook
- Built-in telephone desk and organizer
- Utility staircase from kitchen to second floor

MASTER SUITE WITH BATH

- Located on first floor with private entrance
- View of golf course
- Romantic wood-burning fireplace with glass door enclosures
- Luxurious whirlpool tub
- Spacious glass block walk-in shower
- His and her vanities
- Large walk-in closet

EXCEPTIONAL CONSTRUCTION & DESIGN FEATURES

- Large laundry room with built-in Nutone ironing board
- Intercom and security system
- Central vacuum system
- Hardwood slate and tile floors
- Millwork and built-in cabinetry throughout
- Bonus room

Builder reserves the right to make product changes and/or modifications without prior notice.

For further information, contact:

Ruby Hill Information Center
2001 Ruby Hill Boulevard, Pleasanton, CA 94566
(510) 417-2250 Fax (510) 417-8586





ASPENWOOD HOMES, INC.

WALNUT CREEK

Aspenwood Homes, Inc. prides itself in blending each client's distinctive tastes and unique requirements with the expertise of the area's finest craftsmen. The result is the creation of exceptional custom residences - homes that embody the highest standards of aesthetic excellence, structural quality and attention to detail. As Aspenwood's president and licensed general contractor since the firm was established in 1978, I have built custom homes in Colorado, Danville, Alamo, Orinda, Walnut Creek, and now, at Ruby Hill in Pleasanton. Aspenwood Homes would like to work with you throughout the entire design and building process.

John Tibbles

President