
PREMIA
AT RUBY HILL

[M]OXLEY
REAL ESTATE TEAM

PRELIMINARY

Welcome to Premia at Ruby Hill, a limited edition of fine residences by Signature Properties. These beautifully designed 4 and 5 bedroom homes reflect the custom quality of the surrounding estate homes in the Ruby Hill community.

Signature Properties is building a tradition of excellence, home by home. Since 1983, the Signature Properties name has become synonymous with fine residential communities throughout Northern California. The name represents some of the industry's best talents in land acquisition, home design, construction and customer service. Working closely with company founder James C. Ghielmetti, the team's expertise is reflected in the planning and development of homes that are a source of enduring pride to their owners, and neighborhoods that are assets to their communities.

Signature Properties works closely with its architects and land planners to design appealing living environments. Features and specifications are constantly reviewed and updated, and construction materials are upgraded with the introduction of superior products.

Whether a paired home, an executive family plan or a semi-custom luxury residence, all of the homes built by Signature Properties share an important feature: the company's reputation for providing a quality home of enduring appeal.

PRELIMINARY

Features

WELL-APPOINTED KITCHENS

Kitchen Aid appliances, choice of black or white finish, to include:

36-inch gas cooktop with four sealed burners

Built-in 30-inch double ovens and microwave oven

Trash compactor

Quiet Scrub dishwasher

Thermador stainless steel hood with bun warmer (most plans)

Kohler gourmet spray faucet, instant hot water and soap/lotion dispenser

Raised panel oak cabinetry

Hand-laid ceramic tile countertops with full backsplash

Dramatic recessed and under-cabinet lighting

Convenient pantry storage

Quality vinyl flooring

LUXURIOUS MASTER SUITES AND BATHS

Double-door entry with privacy lock

Vaulted or coffered ceilings (per plan)

Spacious walk-in closets or beveled, frameless mirrored sliding doors (per plan)

Customized closet organizers

Luxurious oval tubs and cultured onyx surrounds

Clear glass-to-glass shower enclosure

Full-width vanity mirrors over cultured onyx vanity tops with double china bottom-set basins

Kohler solid polished brass faucets

Frameless, beveled mirror medicine cabinets

DISTINCTIVE LIVING AREAS

Double entry doors with oak, mahogany or paint finish (per elevation)

Baldwin polished brass handleset with security deadbolt

Hardwood floor in entry

Dramatic vaulted or sloped ceilings (per plan)

Gracious separate dining room

Nine-foot ceiling platelines (most plans)

Decorator-selected lighting fixtures

Wood burning family room fireplace, brick or precast (per plan)

Gas log set precast living room fireplace

FINE CONSTRUCTION FEATURES

Thru-color concrete roof tiles, shake style, 50-year manufacturer's limited warranty

Ten-inch post-tension concrete foundation

Garage interiors fully finished, including taping, texturing and painting

Interior laundry room with laundry tray and white ceramic tile countertops

Rounded interior corners

"Orange peel" texture drywall finish in all rooms

Three architecturally distinctive elevations per plan

White or almond vinyl-clad, dual glazed, energy efficient windows; interior wood-wrapped windows in living room and dining room

Stained oak handrails (all two-story plans) with white balusters

Single-lite French door access to rear yard

Prewired for telephone and computer hook-up in kitchen, family room and all bedrooms

Prewired for cable television in family room and all bedrooms

CONVENIENCE, SAFEGUARD AND ENERGY-SAVING FEATURES

PG&E California Comfort Home

Central air conditioning

Energy-efficient furnace with Weathermaker electronic dual zone automatic setback thermostats

Fire sprinklers and smoke detectors throughout living areas

Honeywell 1500E security system

Energy-efficient, fully insulated exterior walls and ceilings

Quick-recovery hot water heater

Kohler water-saving pressure balanced shower heads

PRELIMINARY

CONVENIENCE, SAFEGUARD AND
ENERGY-SAVING FEATURES
(CONTINUED)

Energy-saving drying cycle
dishwasher

220-volt and gas clothes dryer
outlet

Attached three-car garage with
direct access to interior of home

Side yard service entry to garage
with security deadbolt

Sectional roll-up garage doors
automatic openers

Full side and rear yard fencing
with one gate

Full rain gutters and downspouts

Underground utilities, including
blank conduit for future fibre
optic service hardwired with
Category 5 data cable

CUSTOMIZING OPTIONS

Upgraded Honeywell security
system

Cabinetry in choice of three
materials: standard oak with
natural finish, upgrade maple with
natural finish or painted with
brass pulls

Granite and Corian kitchen
counters in selected colors

Stainless steel commercial grade
Thermador gas cooktop

Kohler jetted tub in master bath

All bedroom/den options offer as
standard a closet with sliding
doors. Three optional den layouts
are available: built-in
entertainment center,
bookshelves or desk, as well as
finished space without built-ins.

AT&T intercom and JBL
surround-sound systems

Hoover in-wall vacuum system

Wide array of flooring and
counter tile choices, standard and
upgrades

Mirrored wardrobe closet doors in
secondary bedrooms

Gas log set in family room
fireplace

Ceramic tile for master bath

Wine vault, in-closet or free-
standing

Steam shower in master bath

MOXLEY
REAL ESTATE TEAM

Private neighborhood with a 24-
hour gate attendant at main entry

Complete landscape maintenance
of all common areas by your
private homeowner's association*

*Homeowners association maintains all
common areas and is supported by monthly
homeowner's dues. See Sales Representative
for details and budget.

Please see your sales representative for
additional options and details. All plans,
features, prices and specifications are subject to
change without notice.

PRELIMINARY



Milano

Plan 2296

Four Bedrooms,

Two Baths,

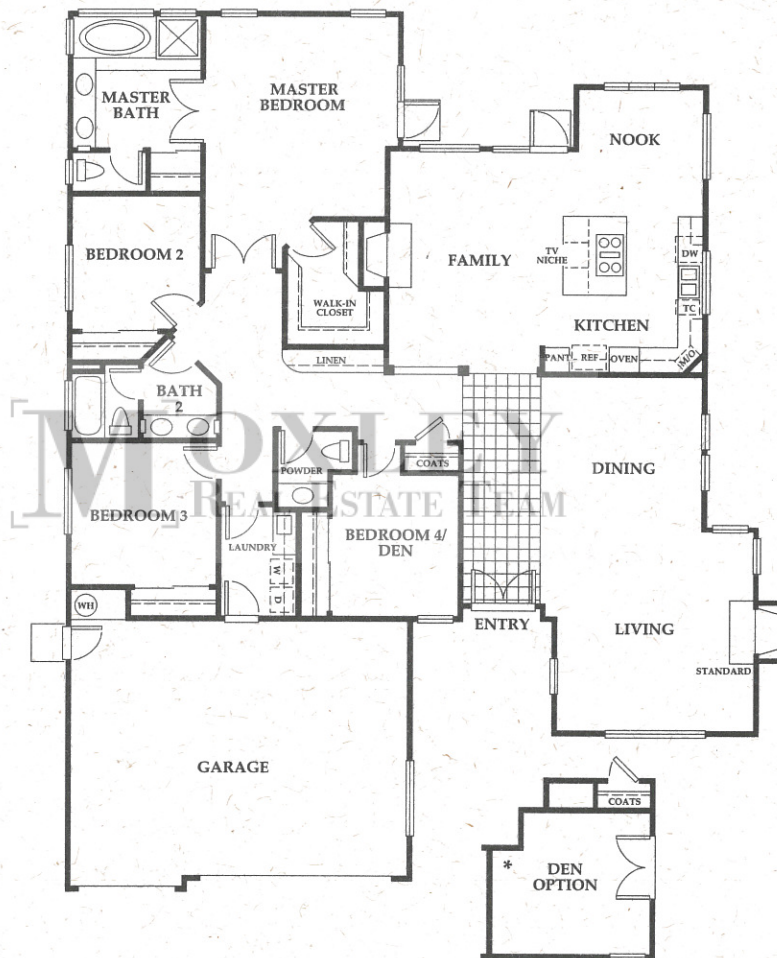
Powder Room

OR

Three Bedrooms,

Den, Two Baths,

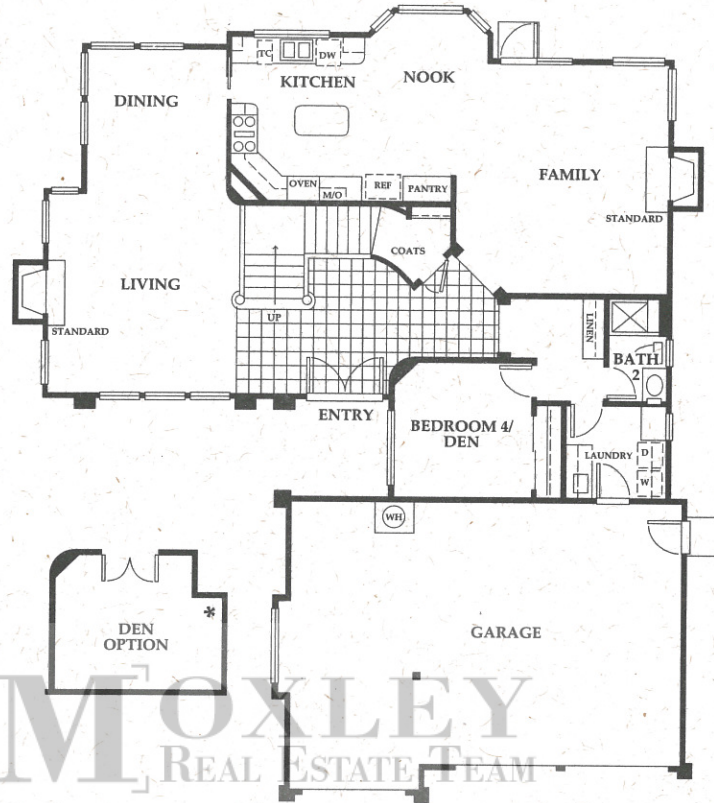
Powder Room



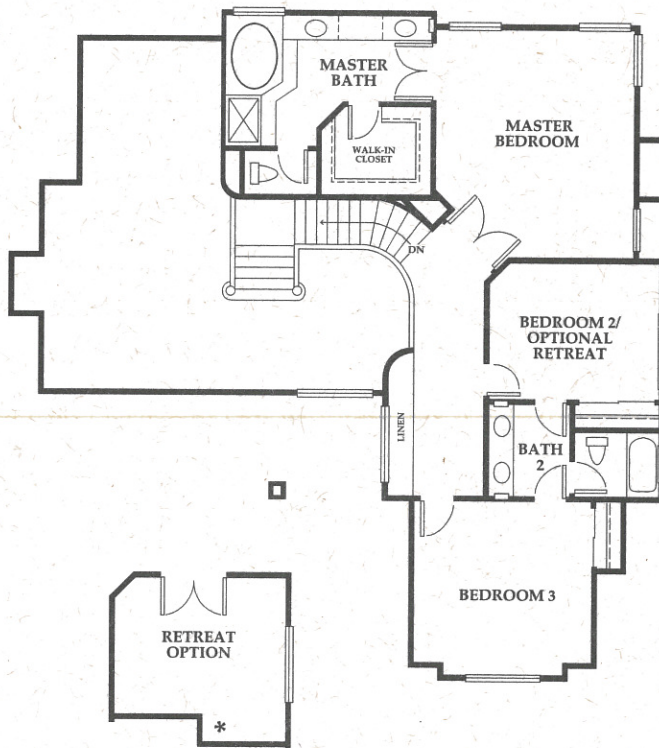
PRELIMINARY

Artist's conception of floorplan. Window placement and size may vary per elevation.

San Marco



First Floor



Second Floor

Plan 2680

Four Bedrooms,

Three Baths,

or

Three Bedrooms,

Den or Retreat,

Three Baths

PRELIMINARY

Artist's conception of floorplan. Window placement and size may vary per elevation.

Trieste

Plan 2806

Four Bedrooms,

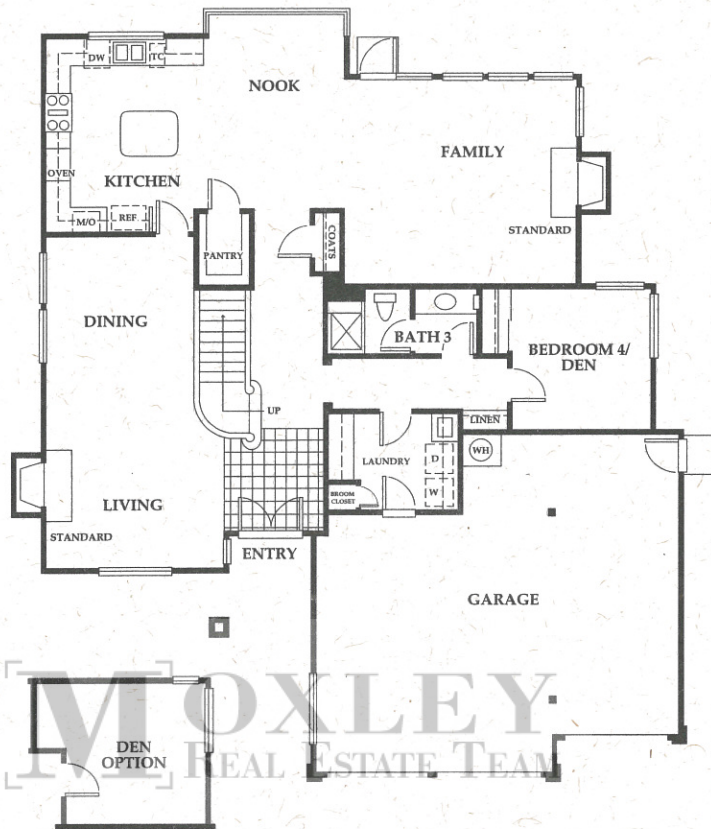
Three Baths

or

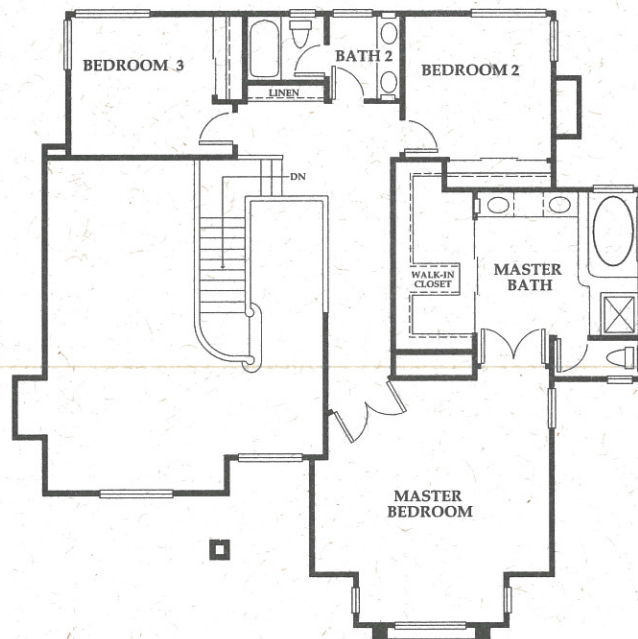
Three Bedrooms,

Den,

Three Baths



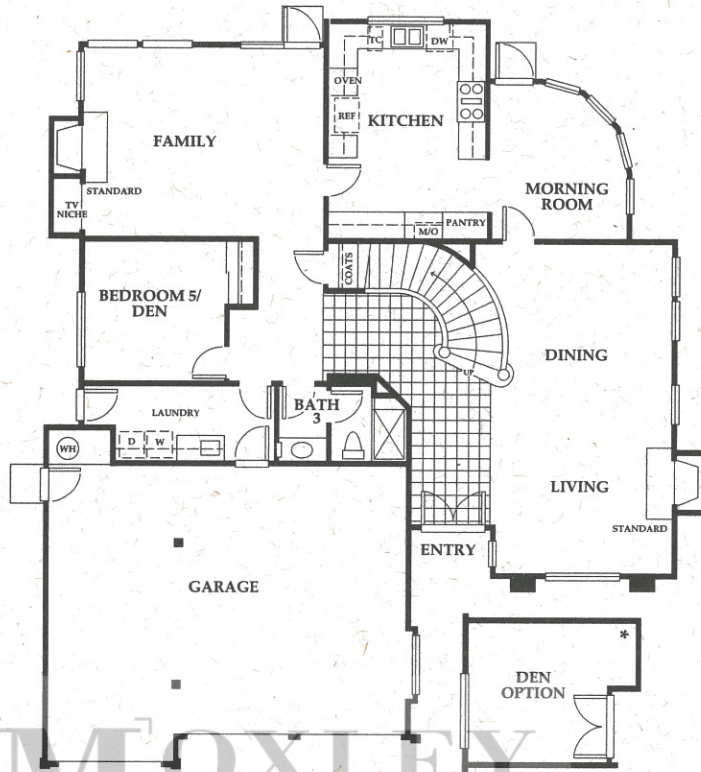
First Floor



Second Floor

PRELIMINARY

Tuscany



First Floor

Plan 3023

Five Bedrooms,

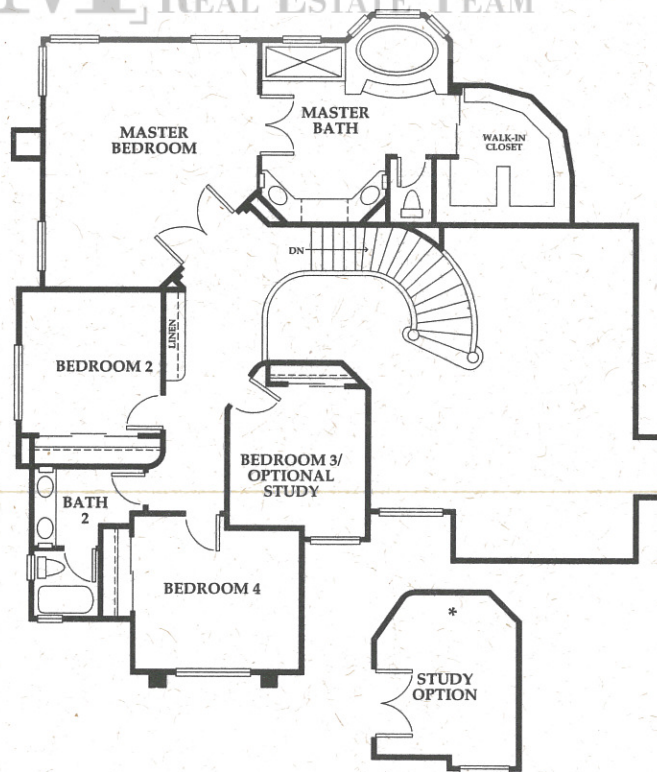
Three Baths

or

Four Bedrooms,

Den or Study,

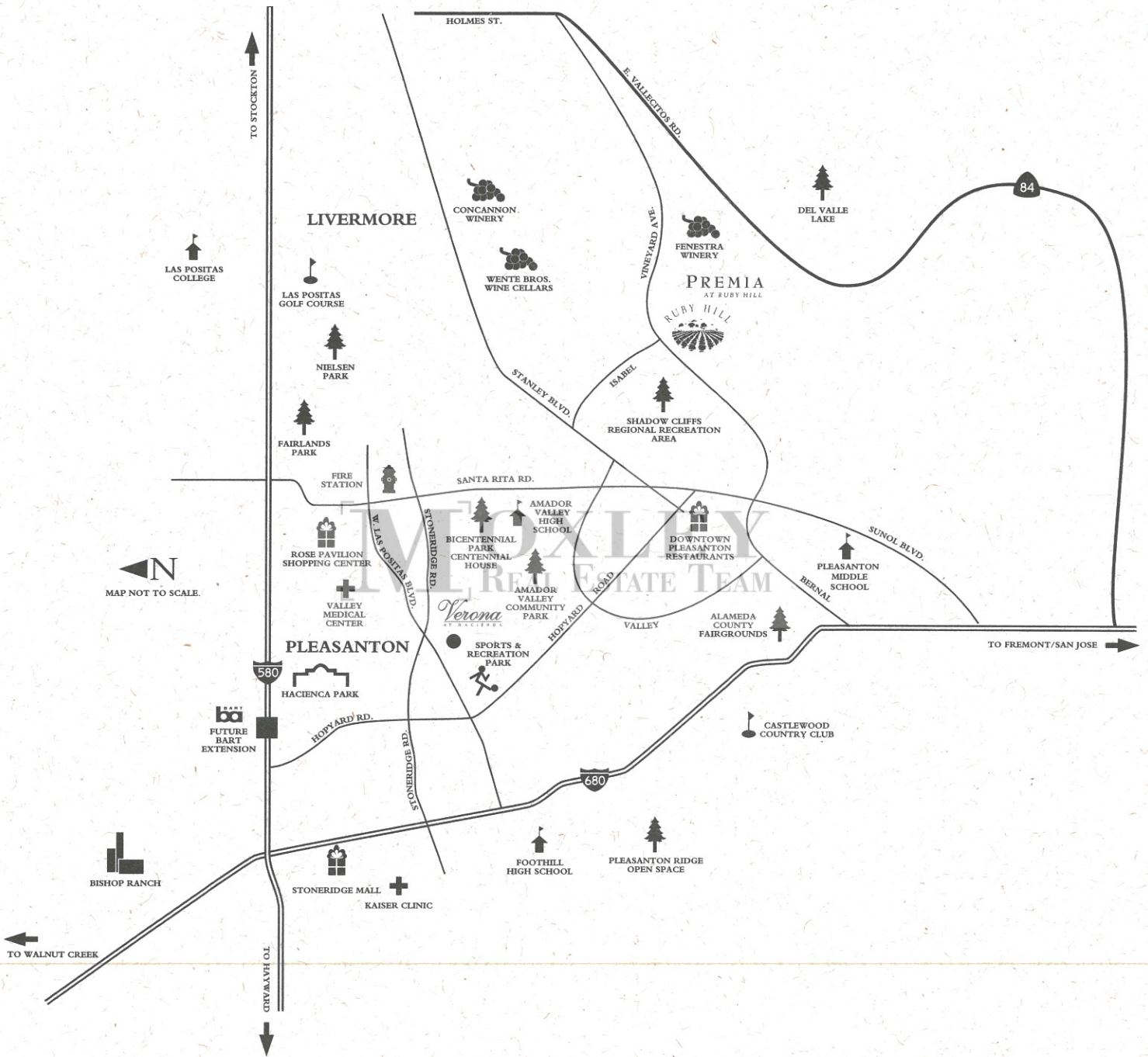
Three Baths



Second Floor

PRELIMINARY

Artist's conception of floorplan. Window placement and size may vary per elevation.



PRELIMINARY