

Country Fair

Dave

[M]OXLEY
REAL ESTATE TEAM



Country Fair *Parc*



Ponderosa has long been recognized as a creative force in California homebuilding. Today in Pleasanton, we are unveiling a collection of new home designs in the Country Fair community: Country Fair Parc. The Country Fair Parc neighborhood has been one of the most desirable in Pleasanton since the original Country Fair community was established in 1980. Ponderosa, building homes and communities for years, continues the Country Fair tradition.

Ponderosa continues its tradition with Country Fair Parc — an exciting collection of 6 junior executive-style homes. The community takes its name from the 15 acre multi-use tennis park located right in the Country Fair neighborhood. The homes have been designed to reflect the active lifestyles of today's young professionals and families of the '80s. As a result, the homes boast low maintenance yards, high style and fine living features. The interior areas are highlighted by dramatic volume ceilings and natural light from wide windows. And the exterior elevations of the homes offer an uncommon "extra" — front yard landscaping, which enhances the appeal of the entire community.

Step by step Ponderosa has created an uncompromising approach to luxury homebuilding here at Country Fair Parc. From the first, Country Fair Parc was planned as another award-winning community in its distinguished architecture; its sophisticated interior planning; its unparalleled array of fine living features; and its classic balance of form and function.

These are the homes of the '80s. Designed for today's active families. An elegant collection of sophisticated, open and very uncommon homes.

The **Redwood** Plan 1834

4 Bedrooms □ 3 Baths
2 Story Home
1,834 Square Feet

The **Sequoia** Plan 2003

5 Bedrooms □ 3 Baths
2 Story Home
2,003 Square Feet

The **Tilden** Plan 2292

4 Bedrooms □ 2½ Baths
2 Story Home
2,292 Square Feet

The **Chabot** Plan 2298

5 Bedrooms □ 3 Baths
2 Story Home
2,298 Square Feet

The **Muirwood** Plan 2405

4 Bedrooms □ 3 Baths
Plus Bonus Room
2 Story Home
2,405 Square Feet

The **Del Valle** Plan 2318

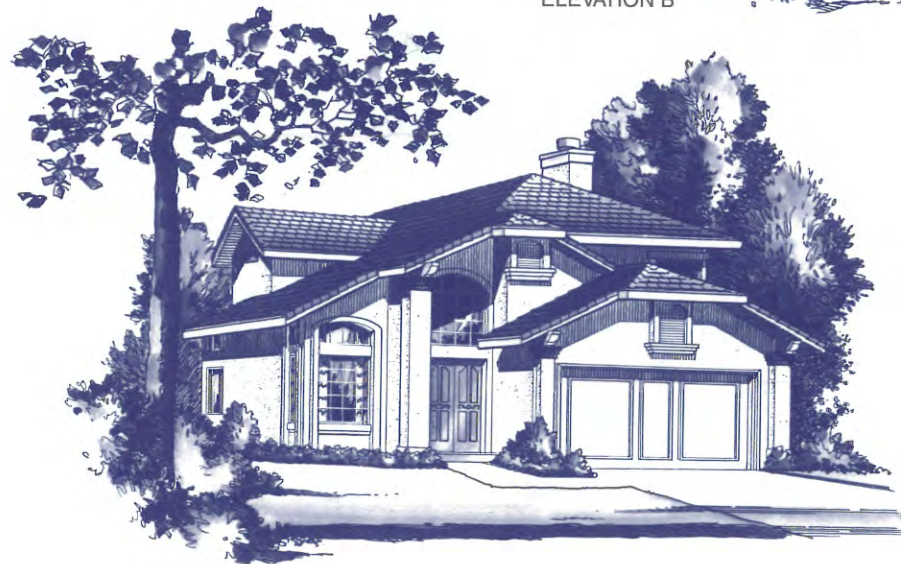
4 Bedrooms □ 2½ Baths
2 Story Home
2,318 Square Feet



ELEVATION A



ELEVATION B

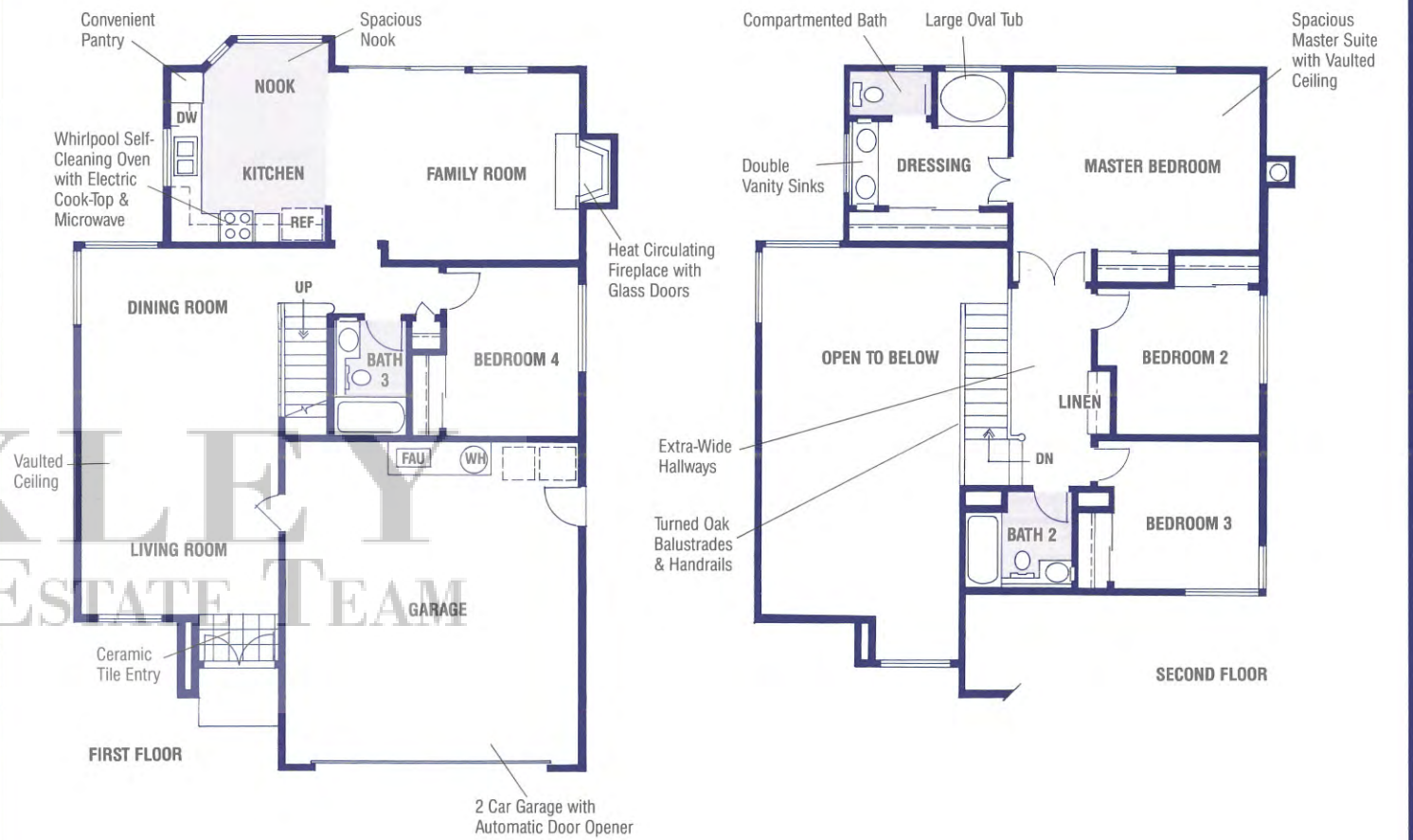


ELEVATION C

ARTIST'S CONCEPTION

The Redwood Plan 1834

4 Bedrooms  3 Baths  2 Story Home  1,834 Square Feet



The Redwood greets you with vaulted ceilings, tile entry and a feeling of elegance which continues through the formal dining area graced by picture windows. This classic home offers the kind of stylish appointments and luxury that spells out 'the good life.'

A spacious breakfast nook and furniture finished cabinetry set off the gourmet kitchen that includes a thoughtfully provided pantry. A heat circulating woodburning fireplace is the center of attention in the adjacent spacious family room. A generous guest room with full bath is also conveniently located downstairs.

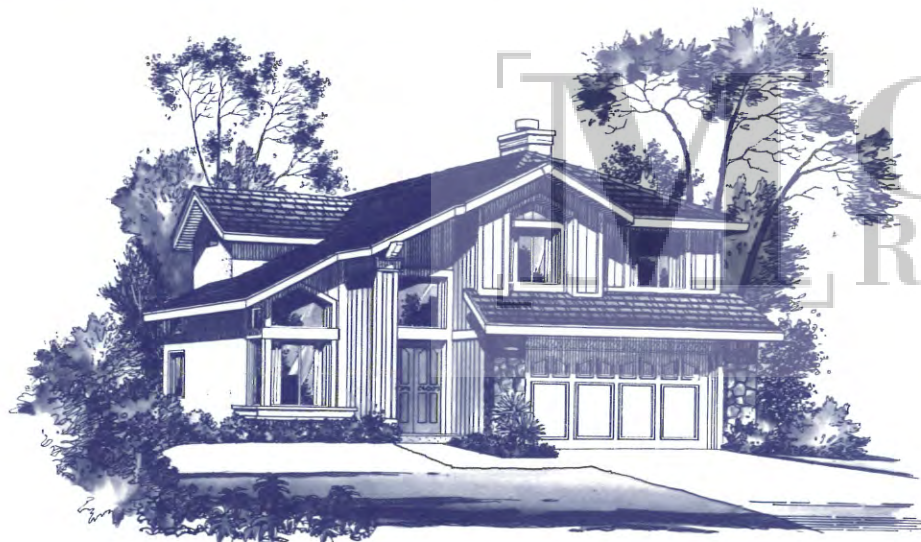
As you move upstairs, you'll notice an abundance of storage space and extra wide hallways. At one end of the hall you'll encounter two ample bedrooms and a full bath with decorator selected fixtures. At the other end, regal double-doors welcome you to the dramatic master bedroom suite. The extra-large bedroom area opens onto a spacious dressing area with extensive closet space with mirrored doors, dual vanities, compartmented bath, and a luxurious oval soaker tub.

For those who value craftsmanship as much as comfort, the Redwood is not only a statement of the quality you deserve, but of your own good taste.

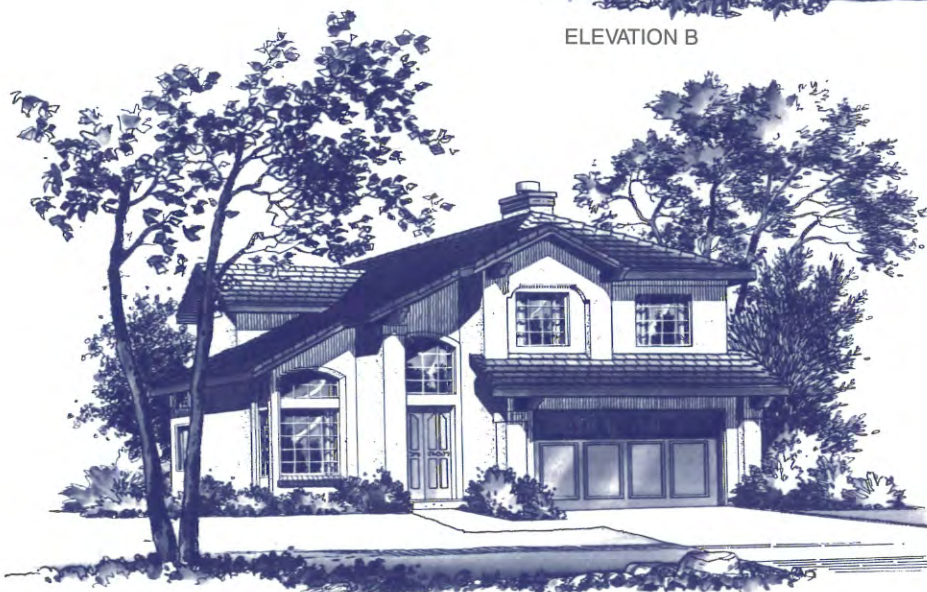
Artist's conception of floorplans. All plans, features and specifications are subject to change without notice. The floorplans and renderings are for information purposes only and are not intended to be a representation as to exact size. Window and door placement may vary with elevation. Rear and side yard landscaping and draperies are not included in purchase price. Square footage is approximate.



ELEVATION A



ELEVATION B

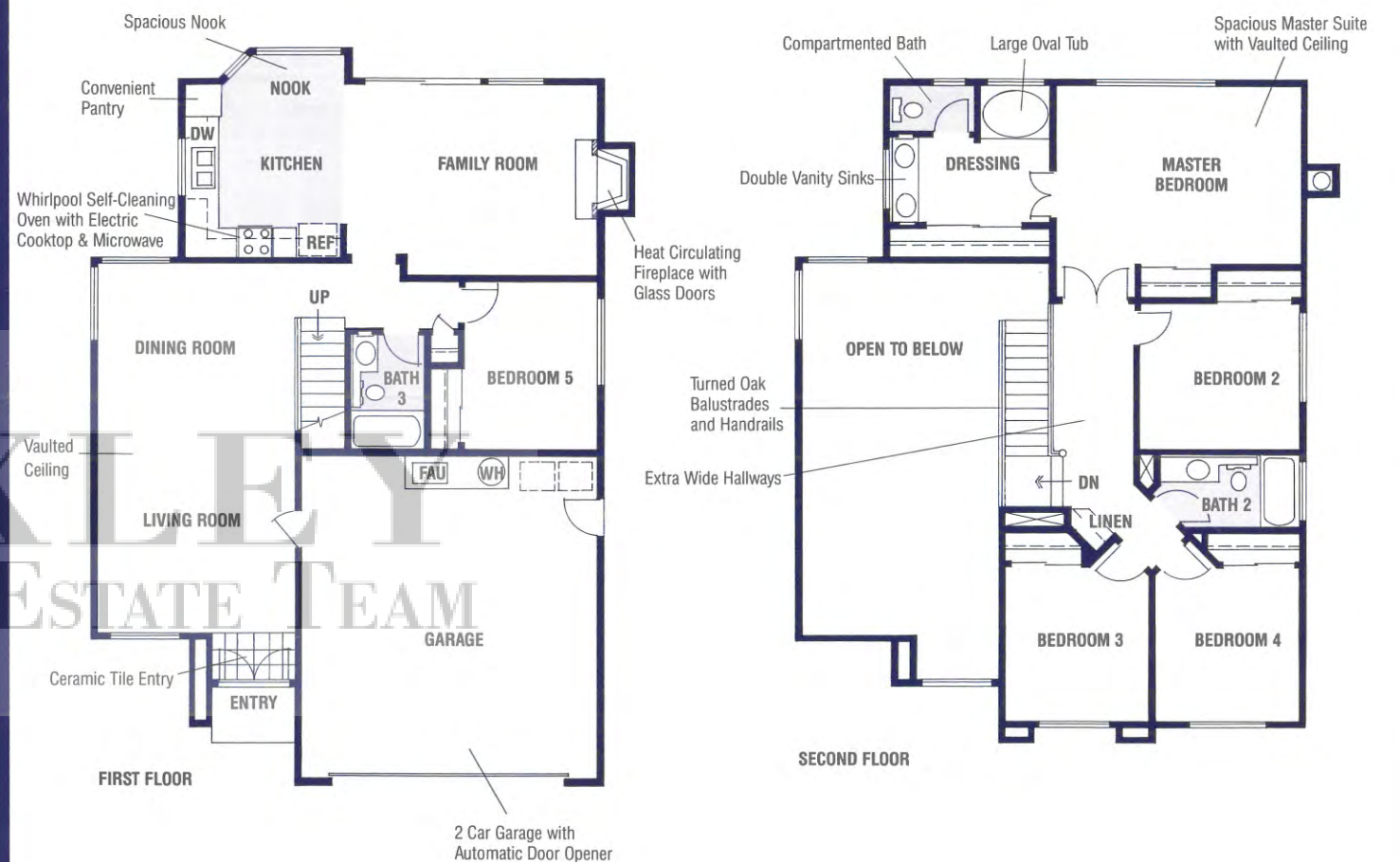


ELEVATION C

ARTIST'S CONCEPTION

The Sequoia Plan 2003

5 Bedrooms  3 Baths  2 Story Home  2,003 Square Feet



Step into the tile entry and majestic vaulted ceilings of the Sequoia. Continue through the elegant formal dining area with picture windows and into the expansive gourmet kitchen. Here you'll find a roomy breakfast nook, furniture-finished cabinetry and a convenient pantry. Look around and see the heat-circulating wood burning fireplace — the focal point of the large adjoining family room. On this level, there is also a cozy guest room and separate full bath.

Upstairs you'll meet with extra wide hallways and plentiful storage space. Three generous bedrooms and a complete

bath with decorator selected fixtures comprise one end of the hall.

At the other end, enter the master bedroom suite through stately double doors. Note the abundant closet space, the double vanity and the welcoming oval soaker tub in the extra-large dressing area.

Attention to detail and harmonious design is apparent throughout this classic home. Living in the Sequoia with its elegant appointments and craftsmanship combines the quality and the luxury you demand.

Artist's conception of floorplans. All plans, features and specifications are subject to change without notice. The floorplans and renderings are for information purposes only and are not intended to be a representation as to exact size. Window and door placement may vary with elevation. Rear and side yard landscaping and draperies are not included in purchase price. Square footage is approximate.



ELEVATION A
(MODEL)



ELEVATION B

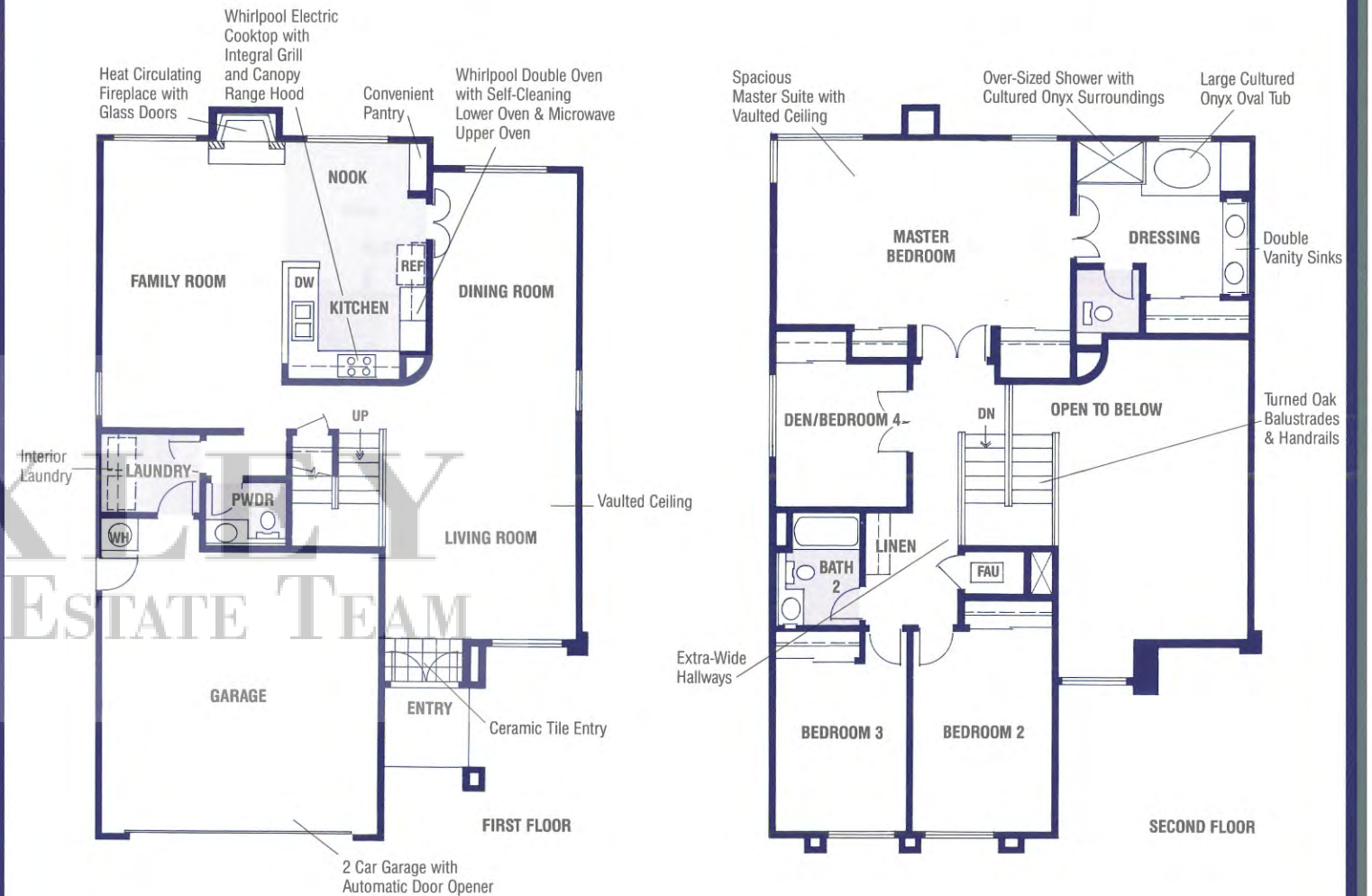


ELEVATION C

ARTIST'S CONCEPTION

The Tilden Plan 2292

4 Bedrooms  2½ Baths  2 Story Home  2,292 Square Feet



Spaciousness, craftsmanship, and livability combine gracefully in the Tilden. As you enter, you are greeted by a vaulted ceiling in the living room and an unusual curved wall that leads you into the formal dining area.

The open design of the kitchen and gracious family room recalls the 'great room' of by-gone days — a perfect setting for informal gatherings. The centrally located fireplace with brick face can be readily enjoyed from either the kitchen-nook area or from the family room. The ample design leaves plenty of room for hobbies, crafts, or game tables. The kitchen beautifully masters the blending of function and space. Around the corner is a separate laundry room and

a convenient powder room.

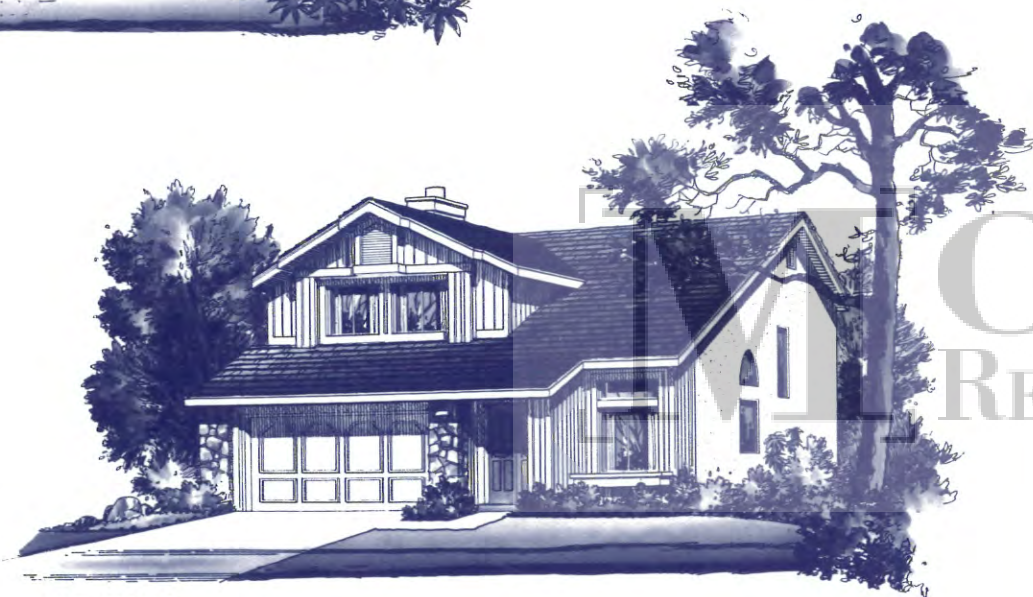
On the second level, three secondary bedrooms are clustered around a full bath off the extra-wide hallway. A breath-taking master suite with vaulted ceilings awaits at the opposite end of the hall. Open the gracious double doors to an over-sized private haven flanked by two closets and enter the spacious dressing area with additional closet space, dual vanities, an extra-large shower and separate cultured onyx oval tub.

With quality amenities and superb styling the Tilden is truly a home of which to be proud.

Artist's conception of floorplans. All plans, features and specifications are subject to change without notice. The floorplans and renderings are for information purposes only and are not intended to be a representation as to exact size. Window and door placement may vary with elevation. Rear and side yard landscaping and draperies are not included in purchase price. Square footage is approximate.



ELEVATION A



ELEVATION B

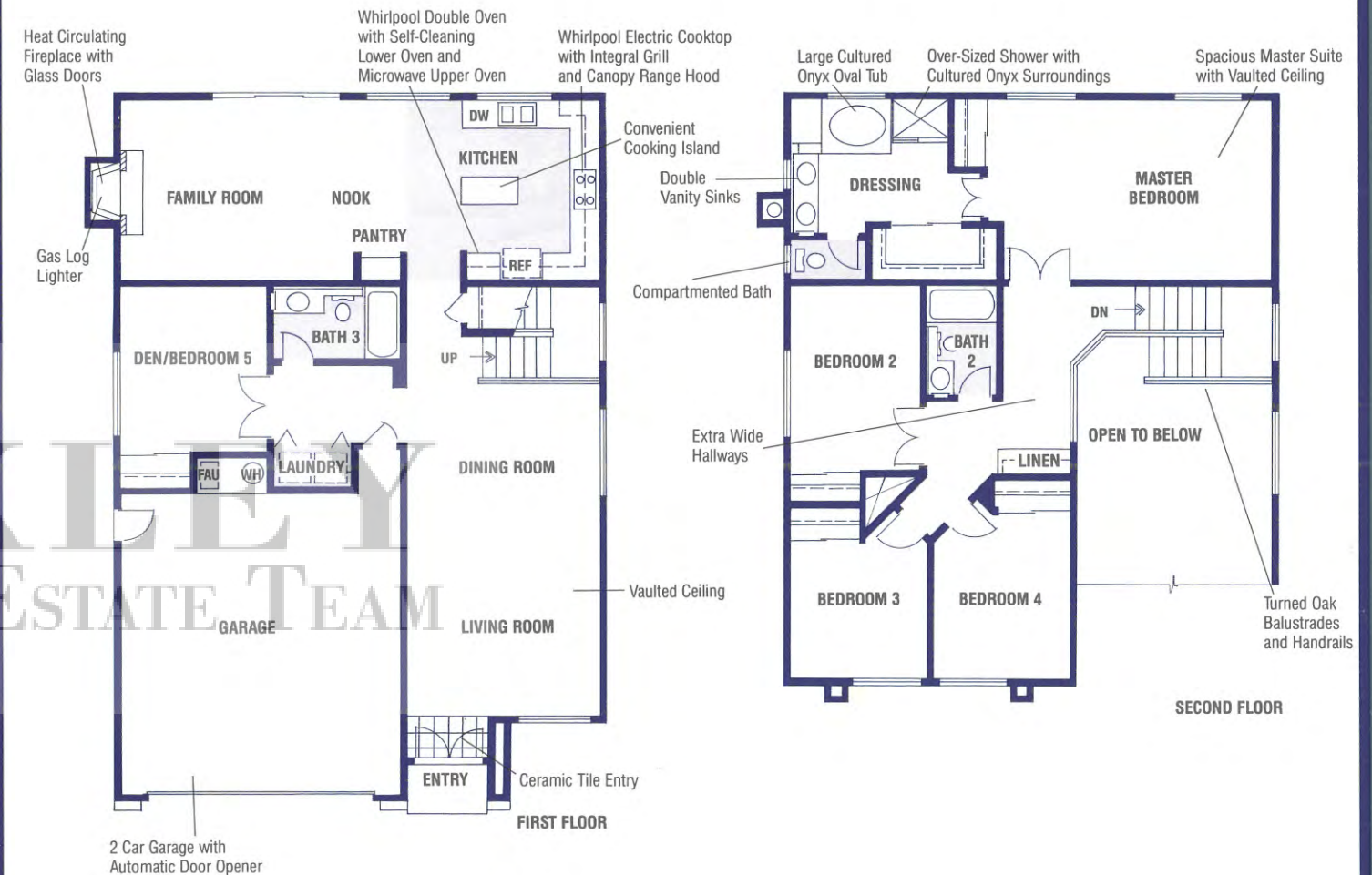


ELEVATION C
(MODEL)

ARTIST'S CONCEPTION

The Chabot Plan 2298

5 Bedrooms  3 Baths  2 Story Home  2,298 Square Feet



The gleaming tile entry of the Chabot opens onto a spacious living room with soaring vaulted ceilings. The elegant feeling continues in the formal dining area accented by a handsome picture window.

A gourmet kitchen with wood cabinetry, luminous ceiling and a wealth of appliances, features a handy tile center island, sure to please the most discriminating taste. Just off the kitchen is the breakfast nook and the family room with a cheerful fireplace as the center of attention — a perfect place for family evenings or informal get-togethers. Completing the downstairs is a comfortable guest room and full bath for your entertaining convenience.

Three additional bedrooms on the second level are grouped around the centrally located second bath and linen closet.

A grand master suite with vaulted ceiling welcomes you at the opposite end of the extra-wide hallway. In the dressing area, you'll find an over-sized walk-in closet, compartmented bath, double vanities, sizeable shower and a lavish cultured onyx oval tub.

For those requiring spacious design, plentiful features and quality craftsmanship, the Chabot not only meets, but exceeds the standard.

Artist's conception of floorplans. All plans, features and specifications are subject to change without notice. The floorplans and renderings are for information purposes only and are not intended to be a representation as to exact size. Window and door placement may vary with elevation. Rear and side yard landscaping and draperies are not included in purchase price. Square footage is approximate.



ELEVATION A
(MODEL)



ELEVATION B

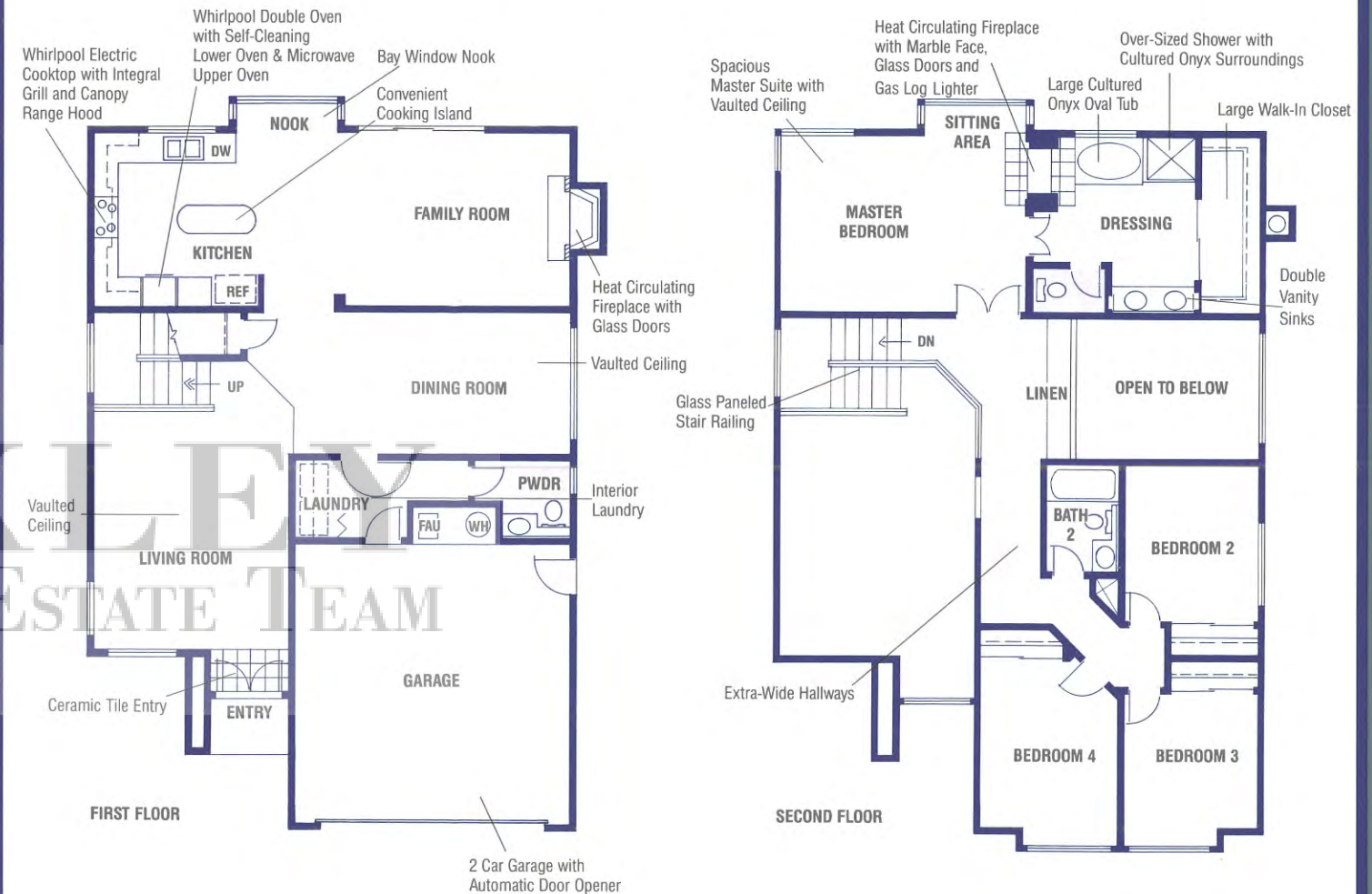


ELEVATION C

ARTIST'S CONCEPTION

The Del Valle Plan 2318

4 Bedrooms □ 2½ Baths □ 2 Story Home □ 2,318 Square Feet



The dramatic vaulted living room heralds the gracious design of the Del Valle. The formal dining room, with raised ceiling, is the quintessential choice for elegant entertaining.

The spacious family room, with heat-circulating fireplace and sliding glass doors is the ideal gathering spot for informal occasions, situated just off the bay window nook and expansive gourmet kitchen. The large tile island is conveniently surrounded by many outstanding appliances, a convenient pantry, and furniture-finished cabinetry. A separate powder room is also thoughtfully located on this level.

Upstairs, the center walkway with extensive storage overlooks both the living room and the dining room. A trio

of secondary bedrooms and a convenient full bath are at one end of the extra-wide hall.

At the other end of the hall is a master bedroom suite 'par excellence.' The stately double doors open to welcome you to the generous bedroom area, with its bay window sitting area and see-through fireplace for your more reflective moods. The dressing area boasts an immense walk-in closet, double vanities, extra-large shower and a cultured onyx oval tub where you can enjoy the other side of the fireplace.

Exceptional design and commitment to excellence are evident throughout this plan. Gracious living and exceptional quality are yours in the Del Valle.

Artist's conception of floorplans. All plans, features and specifications are subject to change without notice. The floorplans and renderings are for information purposes only and are not intended to be a representation as to exact size. Window and door placement may vary with elevation. Rear and side yard landscaping and draperies are not included in purchase price. Square footage is approximate.

**TEMPORARY
BROCHURE**

Country Fair

[M]OXLEY
REAL ESTATE TEAM

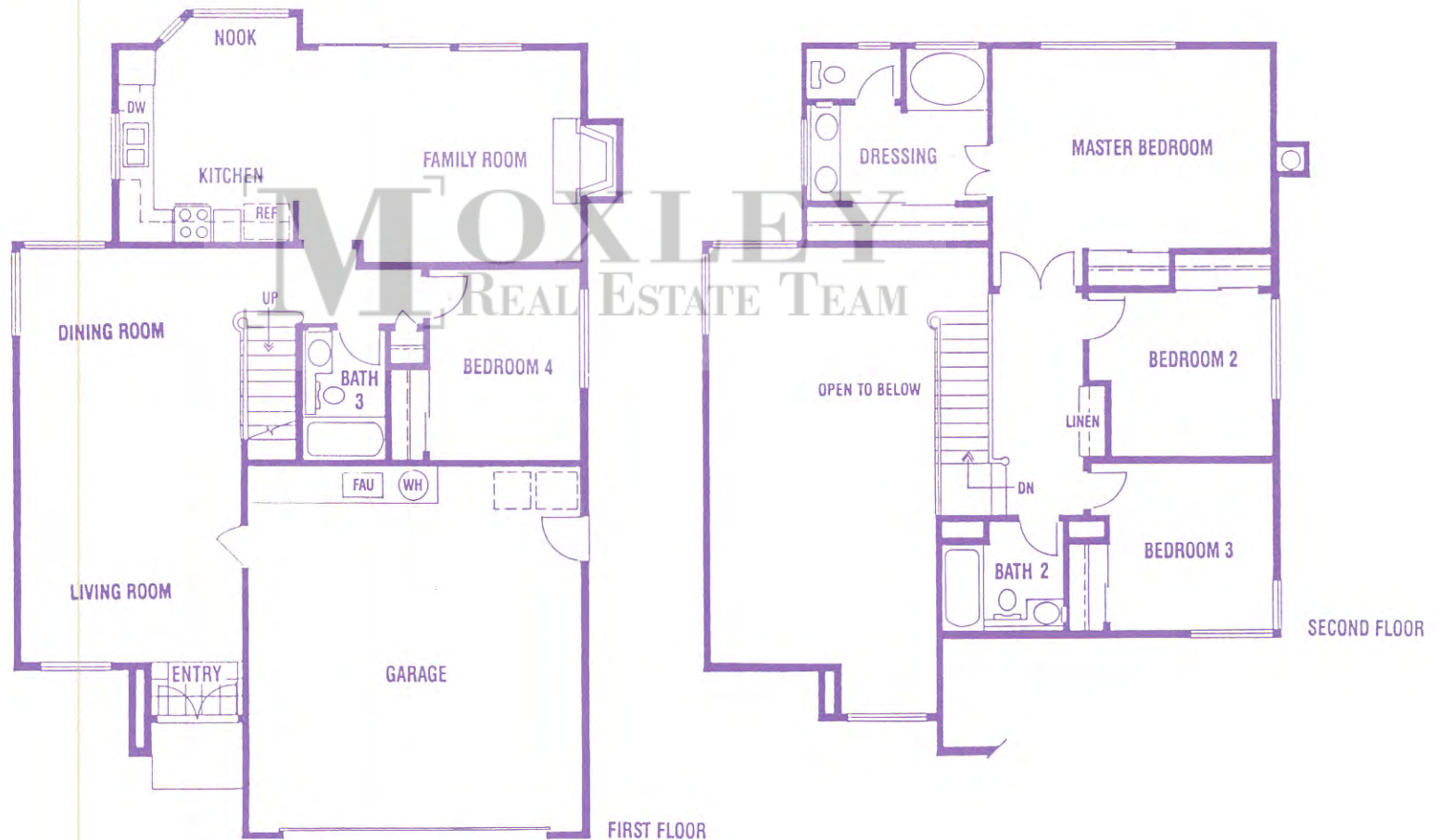
7807 Paseo Santa Cruz
Pleasanton, California 94566
(415) 484-2356

Country Fair Parc

The Redwood Plan 1834

Four Bedrooms, Three Baths

Two Story Home; 1,834 Square Feet



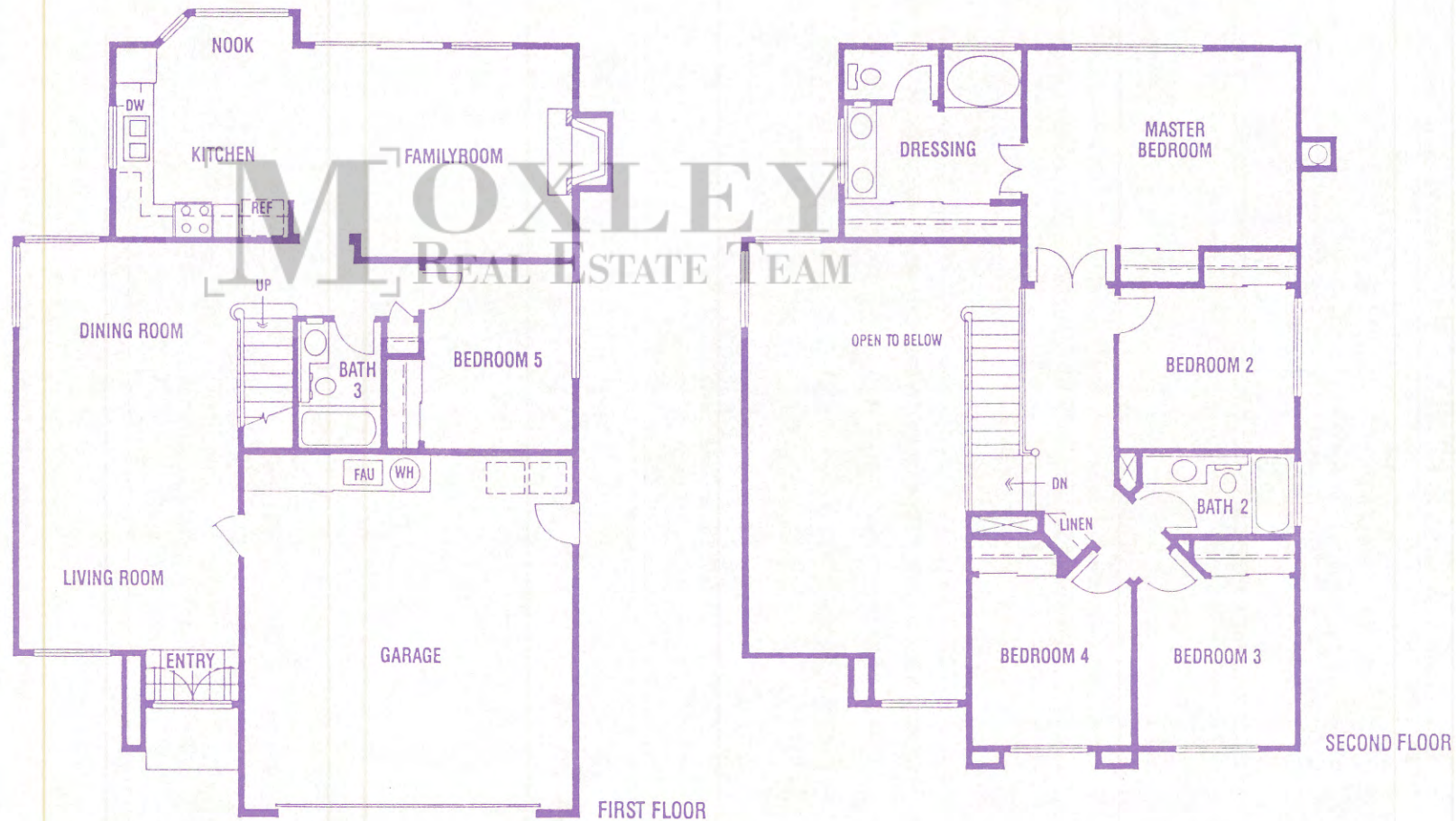
Artist's conception of floorplans. All plans, features and specifications are subject to change without notice. The floorplans and renderings are for information purposes only and are not intended to be a representation as to exact size. Window and door placement may vary with elevation. Landscaping and draperies are not included in purchase price. Square footage is approximate.

Country Fair Parc

The Sequoia Plan 2003

Five Bedrooms, Three Baths

Two Story Home; 2,003 Square Feet

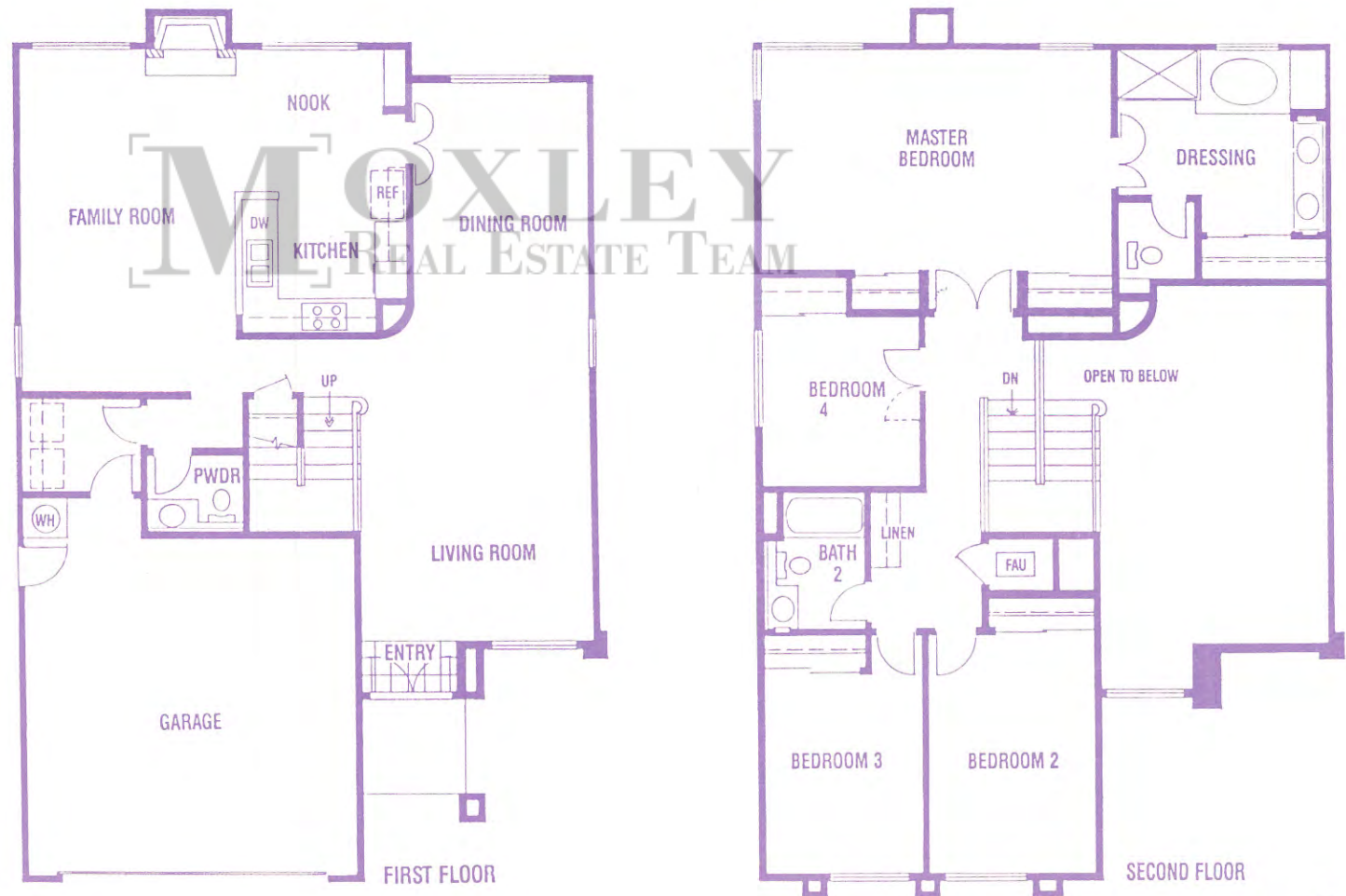


Artist's conception of floorplans. All plans, features and specifications are subject to change without notice. The floorplans and renderings are for information purposes only and are not intended to be a representation as to exact size. Window and door placement may vary with elevation. Landscaping and draperies are not included in purchase price. Square footage is approximate.

Country Fair Parc

The Tilden Plan 2292

Four Bedrooms, Two and One Half Baths
Two Story Home; 2,292 Square Feet



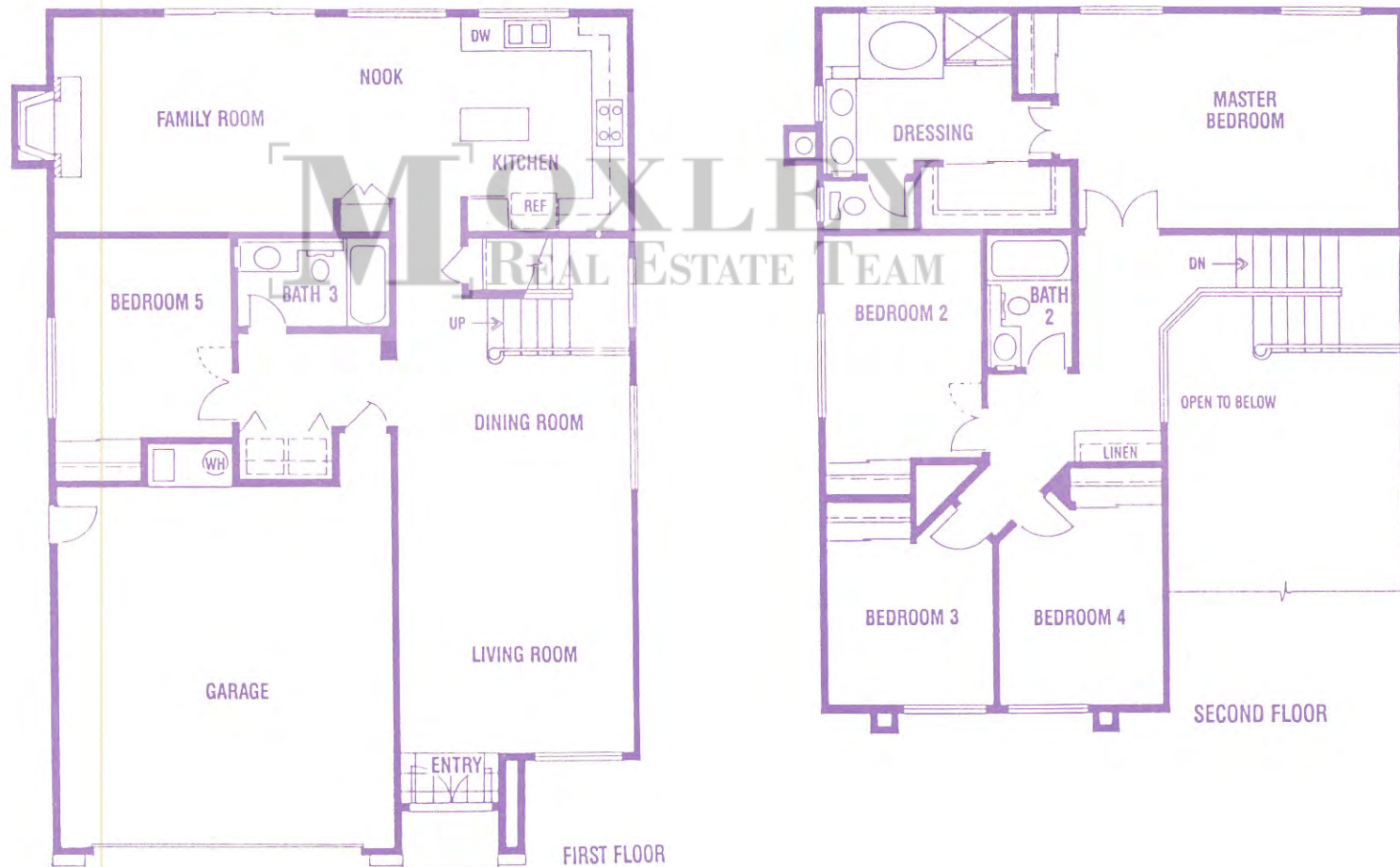
Artist's conception of floorplans. All plans, features and specifications are subject to change without notice. The floorplans and renderings are for information purposes only and are not intended to be a representation as to exact size. Window and door placement may vary with elevation. Landscaping and draperies are not included in purchase price. Square footage is approximate.

Country Fair Parc

The Chabot Plan 2298

Five Bedrooms, Three Baths

Two Story Home; 2,298 Square Feet

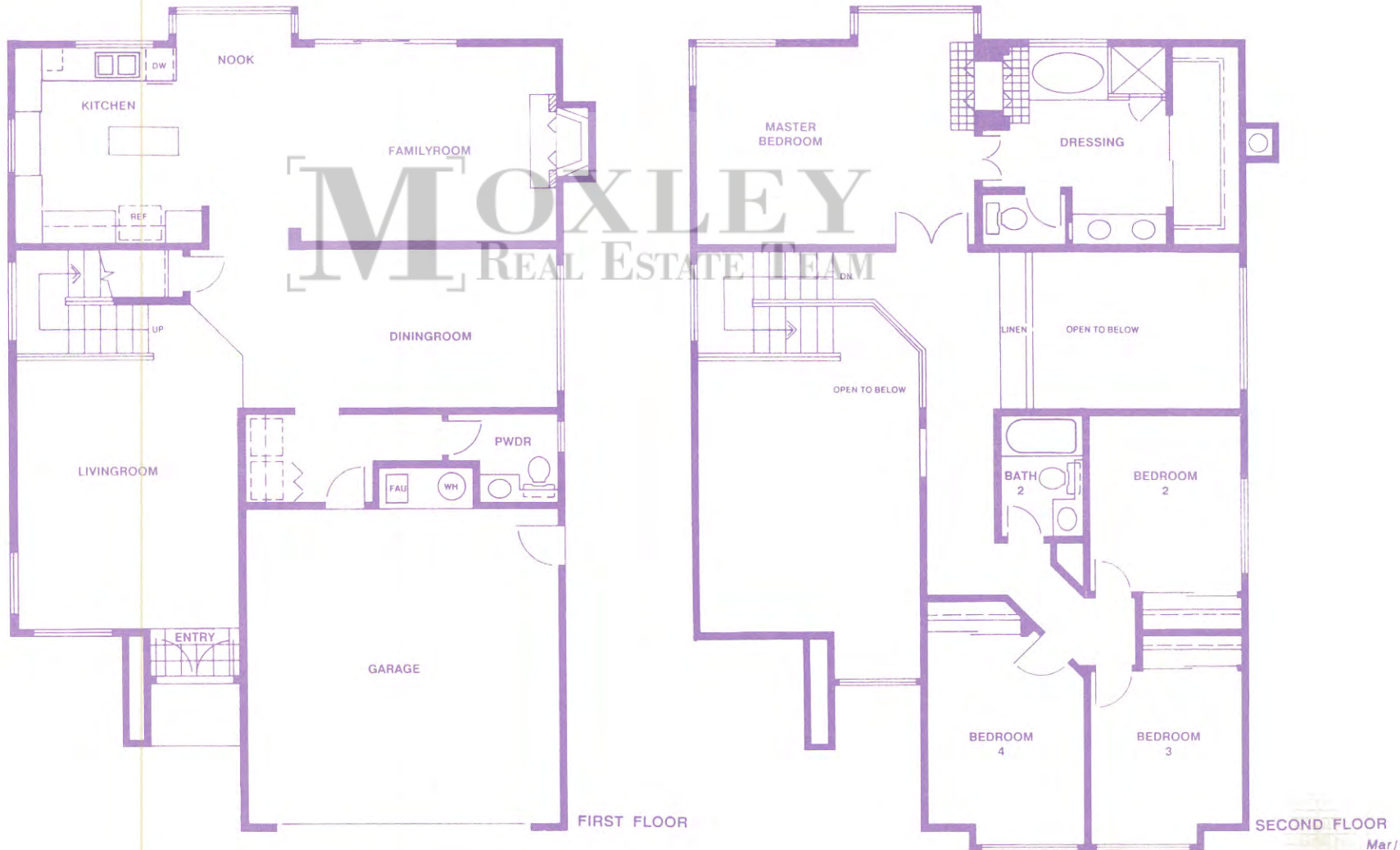


Artist's conception of floorplans. All plans, features and specifications are subject to change without notice. The floorplans and renderings are for information purposes only and are not intended to be a representation as to exact size. Window and door placement may vary with elevation. Landscaping and draperies are not included in purchase price. Square footage is approximate.

Country Fair Parc

The Del Valle Plan 2318

Four Bedrooms, Two and One Half Baths
Two Story Home; 2,318 Square Feet

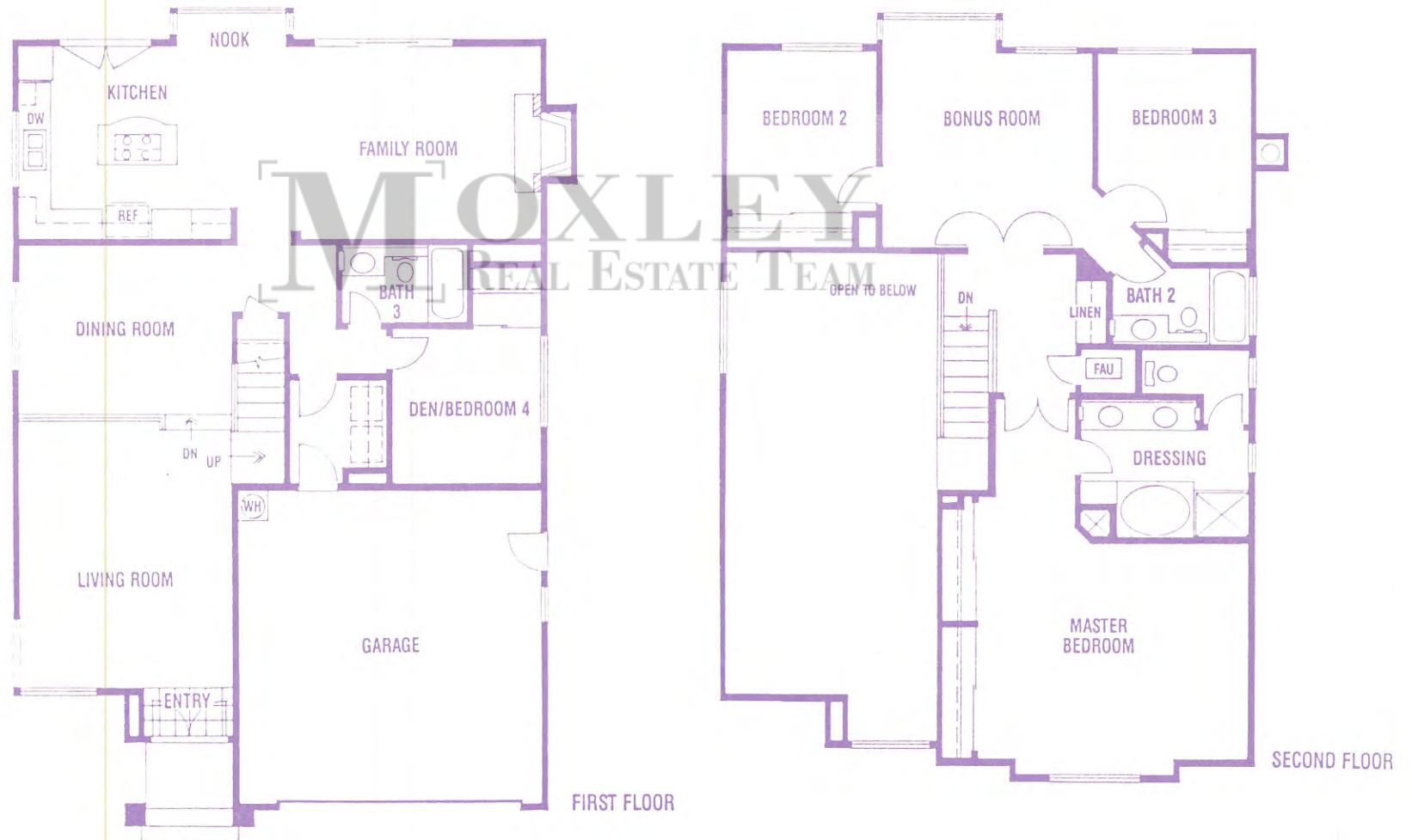


Artist's conception of floorplans. All plans, features and specifications are subject to change without notice. The floorplans and renderings are for information purposes only and are not intended to be a representation as to exact size. Window and door placement may vary with elevation. Landscaping and draperies are not included in purchase price. Square footage is approximate.

Country Fair Parc

The Muirwood Plan 2405

Four Bedroom, Three Baths, plus Bonus Room
Two Story Home; 2,405 Square Feet



Artist's conception of floorplans. All plans, features and specifications are subject to change without notice. The floorplans and renderings are for information purposes only and are not intended to be a representation as to exact size. Window and door placement may vary with elevation. Landscaping and draperies are not included in purchase price. Square footage is approximate.

F E A T U R E S

LIVING AREAS

Stained oak raised panel entry doors
Decorator selected entry door hardware with security deadbolt
Ceramic tile entries
Dramatic vaulted ceilings
Formal dining areas
Heat circulating fireplaces with distinctively designed brick faces and glass doors
Nylon carpeting
Decorator selected lighting fixtures

KITCHENS

Cast iron double compartment sink
Ceramic tile countertops
Stained oak cabinetry with raised-panel doors
Convenient pantries
Recessed ceiling lights
Under cabinet fluorescent lighting
Whirlpool energy-saving multi-cycle dishwasher
1/2 h.p. garbage disposal
Recessed ice-maker hook-up
Decorator selected vinyl flooring

SPACIOUS MASTER SUITES

Dramatic vaulted ceilings
Privacy locks on entry doors
Walk-in closets or double wardrobe closets (per plan)
Separate dressing areas and private baths
Mirrored wardrobe doors in bedroom and dressing area

MASTER BATHS

Dramatic vaulted ceilings
Stained oak cabinetry with raised-panel doors
Cultured onyx oval tubs
Cultured onyx showers
Cultured onyx vanity tops
Double vanity basins
Decorator selected polished chrome and white porcelain finished plumbing fixtures
Full width vanity mirrors
Clear glass shower enclosures

BATHS

Cultured onyx vanity tops
Recessed medicine cabinets
Cultured onyx tubs and shower surrounds

OTHER FINE COUNTRY FAIR PARC FEATURES

Interiors

Mirrored wardrobe doors throughout all secondary bedrooms
Pre-wired outlets for cable television
Pre-wired telephone outlets
Insulated exterior walls and exterior ceilings
Fifty gallon energy-saving water heater
Programmable night set-back thermostat
Energy efficient central forced air heating
Prepped for air conditioning
Textured and painted ceilings
Traditional six-panel interior doors
Decorator selected interior door hardware
Colonial door casing
Painted colonial baseboards
Dual-glazed windows
Decorator selected light fixtures

Exteriors

Fully drywalled garage walls and ceiling
Sectional roll-up garage doors with automatic door opener and two controls
Concrete driveways and entry walkways
Full side and rear yard redwood fencing with two gates
Front yard landscaping (starter package) with automatic sprinkler system
Tile roofs
Underground utilities
200 AMP electrical service

Country Fair
Parc

We reserve the right to revise plans, features, communities, design specifications and prices without notice or obligation. Certain optional items must be ordered before cutoff date. See sales representative for details.